
CHAPTER 10

Software Engineering

(Solutions to Odd-Numbered Problems)

Review Questions

1. Software, like many other products, goes through a cycle of repeating phases until it becomes obsolete.
3. Four phases in the development process are analysis, design, implementation, and testing.
5. The design phase defines how the system will accomplish what was defined in the analysis phase. In the design phase, all components of the systems are defined. The two trends in this phase are procedure-oriented design, and object-oriented design.
7. Cohesion is a measure of how closely the processes in a program are related. Coupling is a measure of how tightly two modules are bound to each other.
9. The goal of testing phase is to find errors. There are two types of testing: glass-box (or white-box) and black-box.

Multiple-Choice Questions

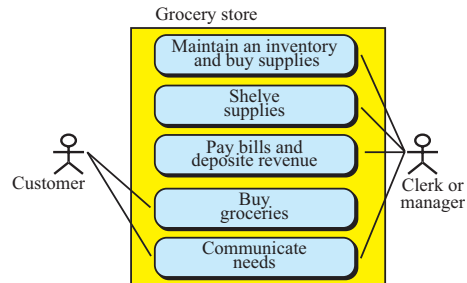
11. d 13. c 15. d 17. b 19. a

Exercises

21. Use of constants instead of literals makes the modification much easier if the values are changed latter.
23. Pass-by reference provides more cohesions between the two modules.

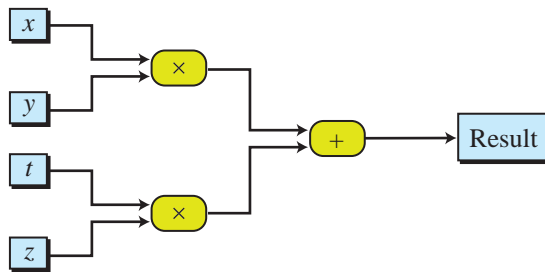
25. One possible solution is shown in Figure S10.25.

Figure S10.25 Exercise 25



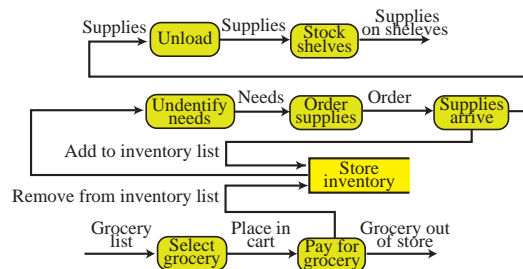
27. One possible solution is shown in Figure S10.27.

Figure S10.27 Exercise 27



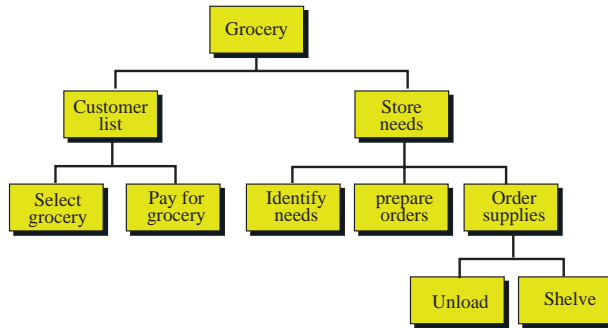
29. One possible solution is shown in Figure S10.29.

Figure S10.29 Exercise 29



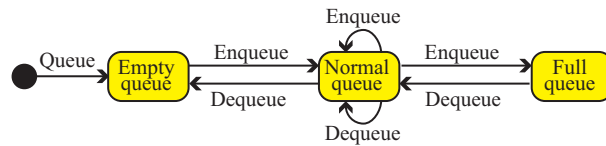
31. One possible solution is shown in Figure S10.31.

Figure S10.31 Exercise 31



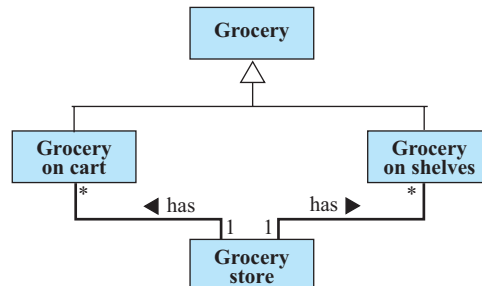
33. One possible solution is shown in Figure S10.33.

Figure S10.33 Exercise 33



35. One possible solution is shown in Figure S10.35.

Figure S10.35 Exercise 35



37. One possible solution is shown in Figure S10.37.

Figure S10.37 Exercise 37

Grocery
status: shelved on cart ordered
shelve placeOnCart order

39.

First integer	Second integer	Third integer
1000	1000	1000
1000	1000	1999
1000	1999	1000
1000	1999	1999
1999	1000	1000
1999	1000	1999
1999	1999	1000
1999	1999	1999